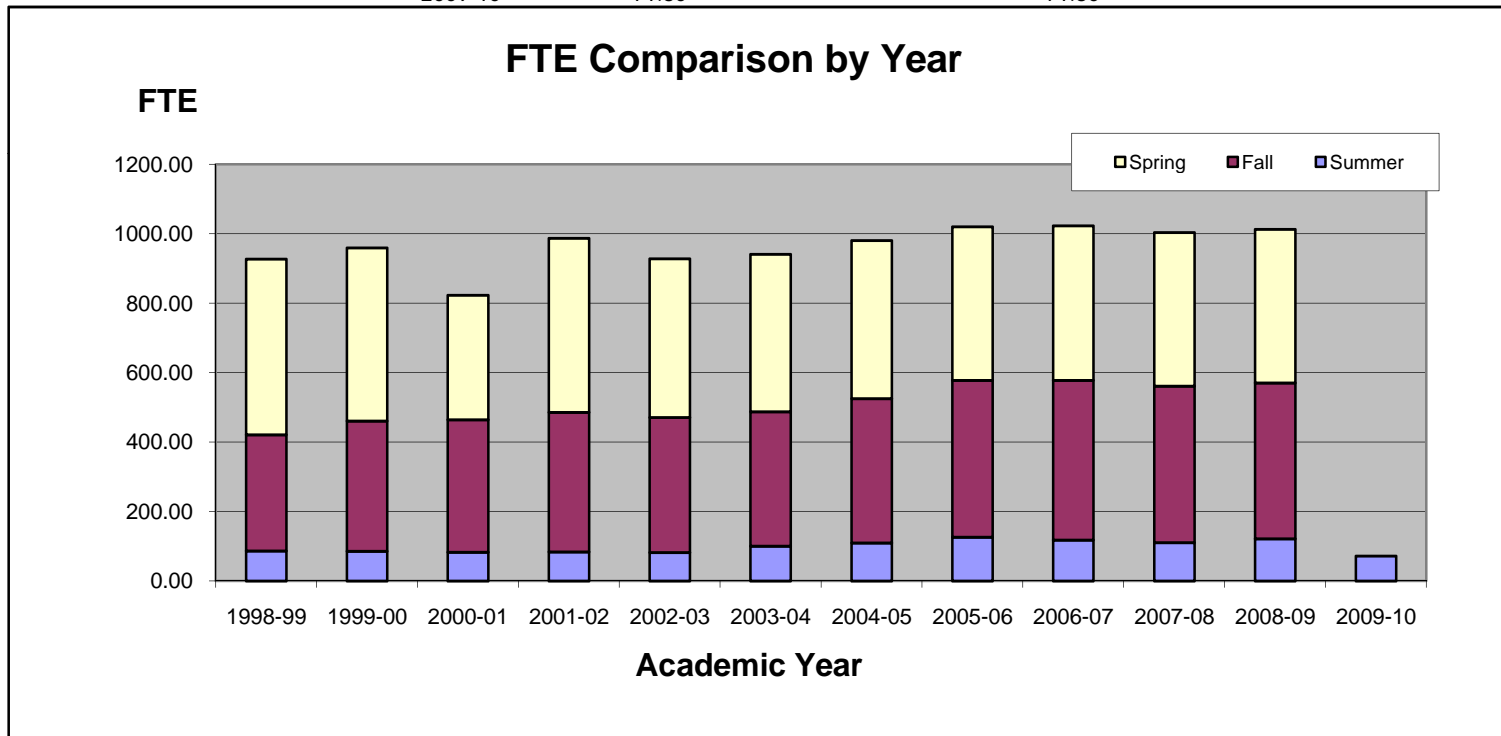


FTE Comparison (1998-2010)

by Year

Report Date: May 11, 2009

	Term			Total	Estimated Total
	Summer	Fall	Spring		
1998-99	86.78	334.17	506.35	927.30	
1999-00	85.62	375.24	498.57	959.43	
2000-01	83.11	381.45	358.40	822.96	
2001-02	83.87	401.42	501.88	987.17	
2002-03	82.00	388.97	456.88	927.85	
2003-04	100.53	386.75	453.83	941.11	
2004-05	109.38	415.57	455.12	980.07	
2005-06	126.47	451.75	442.01	1020.23	
2006-07	117.50	460.66	444.86	1023.02	
2007-08	110.20	451.28	442.05	1003.53	
2008-09	121.73	448.95	442.10	1012.78	
2009-10	71.80			71.80	



FTE/Headcount Spring 2007 (07S), Spring 2008 (08S), Spring(09S)

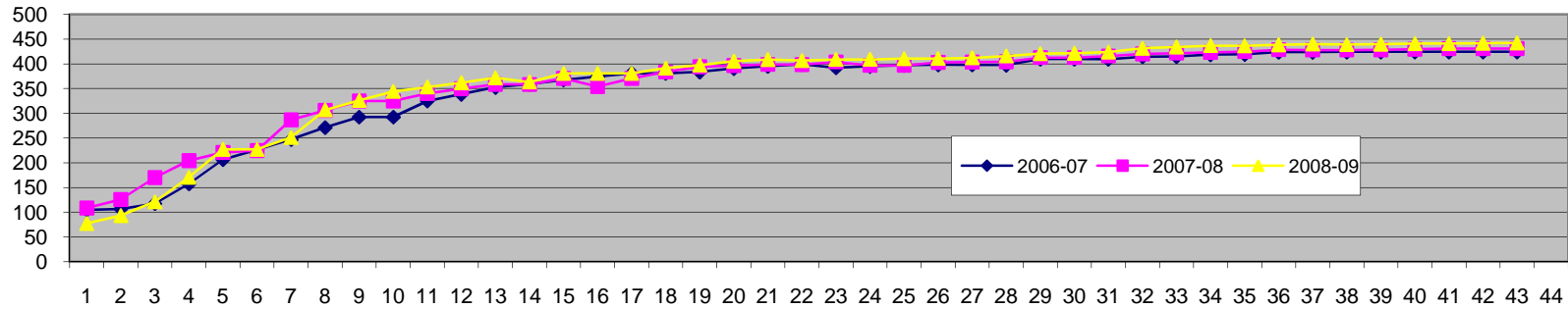
by Week

Report Date: May 11, 2009

FTE							Headcount						
		2006-07	2007-08	2008-09	Change	% Change			2006-07	2007-08	2008-09	Change	% Change
	-8 Weeks	104.3	108.2	77.4	-30.8	-28.4%		-8 Weeks	348	356	227	-129	-36.2%
	-7 Weeks	106.4	125.6	93.4	-32.2	-25.6%		-7 Weeks	351	419	285	-134	-32.0%
	-6 Weeks	116.9	169.7	120.9	-48.8	-28.7%		-6 Weeks	361	558	374	-184	-33.0%
	-5 Weeks	156.9	204.2	170.8	-33.3	-16.3%		-5 Weeks	512	683	548	-135	-19.8%
	-4 Weeks	206.0	220.8	227.0	6.2	2.8%		-4 Weeks	735	746	786	40	5.4%
	-3 Weeks	226.0	224.3	227.0	2.6	1.2%		-3 Weeks	818	763	786	23	3.0%
Early Regis	-2 Weeks	246.8	286.5	250.9	-35.6	-12.4%	Early Regis	-2 Weeks	900	999	898	-101	-10.1%
	-2 Weeks +	270.9	305.5	306.6	1.1	0.4%		-2 Weeks +	984	1078	1071	-7	-0.6%
	-2 Weeks +	292.1	324.7	326.1	1.4	0.4%		-2 Weeks +	1142	1173	1140	-33	-2.8%
	-2 Weeks +	292.1	324.7	344.0	19.3	6.0%		-2 Weeks +	1142	1173	1212	39	3.3%
	-1 Week	324.7	339.8	352.9	13.1	3.8%		-1 Week	1236	1226	1252	26	2.1%
	-1 Week +1	338.2	349.7	361.7	12.1	3.4%		-1 Week +1	1281	1273	1298	25	2.0%
	-1 Week +2	352.4	358.1	371.5	13.4	3.7%		-1 Week +2	1336	1307	1340	33	2.5%
	-1 Week +3	358.6	358.1	363.1	5.0	1.4%		-1 Week +3	1369	1307	1308	1	0.1%
	-1 Week +4	367.1	370.3	380.7	10.4	2.8%		-1 Week +4	1409	1372	1375	3	0.2%
	-1 Week +5	374.1	354.1	380.7	26.6	7.5%		-1 Week +5	1437	1385	1375	-10	-0.7%
	After Purge	380.5	370.5	380.7	10.2	2.8%		After Purge	1470	1397	1375	-22	-1.6%
	Classes Sta	380.5	383.5	391.2	7.7	2.0%		Classes Sta	1470	1461	1445	-16	-1.1%
	+1 day	383.6	394.0	397.3	3.3	0.8%		+1 day	1496	1506	1477	-29	-1.9%
	+2 days	390.3	396.6	405.0	8.4	2.1%		+2 days	1506	1516	1510	-6	-0.4%
	+3 days	395.0	398.7	408.4	9.7	2.4%		+3 days	1526	1518	1524	6	0.4%
	+4 days	398.8	398.1	406.6	8.5	2.1%		+4 days	1542	1523	1519	-4	-0.3%
	Wk 1	391.9	403.6	408.8	5.2	1.3%		Wk 1	1537	1545	1539	-6	-0.4%
	Wk1+2	394.9	396.8	408.8	12.0	3.0%		Wk1+2	1506	1523	1539	16	1.1%
	Wk1+3	396.7	396.8	410.2	13.4	3.4%		Wk1+3	1513	1523	1541	18	1.2%
	Wk1+4	398.1	402.6	410.7	8.1	2.0%		Wk1+4	1507	1567	1548	-19	-1.2%
	Wk2	397.6	403.5	411.8	8.4	2.1%		Wk2	1515	1570	1561	-9	-0.6%
	Wk2+1	397.5	404.0	415.7	11.7	2.9%		Wk2+1	1515	1583	1579	-4	-0.3%
	Wk2+2	409.5	412.6	420.4	7.8	1.9%		Wk 3	1570	1628	1602	-26	-1.6%
	Wk 3	409.5	412.6	421.2	8.6	2.1%		Wk 3	1570	1628	1634	6	0.4%
	Wk 4	409.0	415.7	423.5	7.8	1.9%		Wk 4	1570	1679	1670	-9	-0.5%
	Wk 5	414.1	419.8	431.1	11.3	2.7%		Wk 5	1596	1704	1712	8	0.5%
	Wk 6	414.5	421.5	433.9	12.4	2.9%		Wk 6	1598	1727	1764	37	2.1%
	Wk 7	418.4	423.1	436.7	13.6	3.2%		Wk 7	1651	1747	1777	30	1.7%

Wk 8	418.9	424.7	436.2	11.5	2.7%	Wk 8	1666	1762	1780	18	1.0%
Wk 9	423.6	428.5	438.3	9.7	2.3%	Wk 9	1700	1780	1786	6	0.3%
Wk 10	423.5	427.9	439.9	12.0	2.8%	Wk 10	1702	1806	1800	-6	-0.3%
Wk 11	424.1	427.8	439.0	11.2	2.6%	Wk 11	1704	1821	1789	-32	-1.8%
Wk 12	424.1	428.2	439.5	11.3	2.6%	Wk 12	1704	1829	1814	-15	-0.8%
Wk 13	424.1	429.3	440.7	11.4	2.7%	Wk 13	1704	1836	1843	7	0.4%
Wk 14	424.1	430.7	440.7	10.1	2.3%	Wk 14	1704	1859	1848	-11	-0.6%
Wk 15	424.1	430.8	441.4	10.6	2.5%	Wk 15	1704	1861	1877	16	0.9%
Wk 16	424.1	430.7	442.1	11.4	2.7%	Wk 16	1704	1862	1892	30	1.6%
Wk 17						Wk 17					
End Semester						End Semester					

FTE Comparison Spring (07S) to Spring (09S)



Morgan Community College
COUNTABLE FTE COMPARISONS BY SITE
 Report Date: May 11, 2009

	Center Based														Program Based										
	Bennett			Burlington			Ft Morgan				Limon			Wray			Ag Businss			CCC Online			Total		
							On Campus		Online																
	07S	08S	09S	07S	08S	09S	07S	08S	09S	09S	07S	08S	09S	07S	08S	09S	07S	08S	09S	07S	08S	09S	07S	08S	09S
-8 Weeks		0.1	0.4		0.23	0.9		95.78	56.7			0.23	4.9		1.13	3.3		0.9	0.9		10.8	10.3	0.0	109.2	77.4
-7 Weeks		0.1	0.4		0.2	0.9		107.8	63.0			0.7	5.8		1.2	5.5		0.9	5.1		14.6	12.6	0.0	125.6	93.4
-6 Weeks	0.0	1.1	5.3	3.3	3.0	1.0	84.7	132.0	78.4		2.7	4.7	8.7	13.4	6.7	6.8	2.4	1.2	5.7	10.4	20.9	15.0	116.9	169.7	120.9
-5 Weeks	0.4	1.6	12.9	3.5	4.2	6.6	114.7	147.4	96.9		5.2	4.9	17.3	17.6	16.1	7.7	3.9	4.5	7.2	12.8	25.5	22.1	157.9	204.1	170.7
-4 Weeks	1.1	3.8	14.7	7.6	5.1	14.2	149.1	156.7	121.8	5.3	6.0	4.9	19.1	21.6	16.4	17.5	6.3	5.7	6.9	15.0	28.2	27.4	206.6	220.8	226.9
-3 Weeks	5.9	4.0	14.7	9.1	6.0	14.2	154.5	157.9	121.8	5.3	8.3	4.9	19.1	25.1	16.7	17.5	6.5	5.7	6.9	17.5	29.1	27.4	226.9	224.3	226.9
-2 Weeks	10.7	52.8	15.4	10.7	8.4	15.3	159.7	165.2	139.5	5.6	10.6	5.9	19.6	28.6	18.4	18.0	6.6	6.0	6.9	20.0	29.9	30.6	246.8	286.5	250.9
-2 Weeks +1	25.4	57.7	43.4	10.9	9.8	17.3	163.7	169.8	152.8	6.2	14.5	12.5	26.1	28.7	18.8	19.2	6.6	6.0	6.9	21.3	30.9	34.6	270.9	305.5	306.5
-2 Weeks +2	40.8	61.4	53.9	12.3	10.4	17.9	165.3	172.7	158.9	4.2	16.7	20.4	27.5	29.1	21.4	19.3	6.6	6.3	6.9	21.4	32.1	37.2	292.1	324.7	325.8
-2 Weeks +3	40.8	61.4	61.3	12.3	10.4	20.4	165.3	172.7	164.2	4.3	16.7	20.4	28.2	29.1	21.4	19.8	6.6	6.3	7.2	21.4	32.1	38.6	292.1	324.7	344.0
-1 Week	56.8	63.7	62.7	14.0	11.0	20.7	173.3	177.8	166.6	5.2	22.3	25.2	28.1	29.2	22.0	20.0	6.6	6.6	8.1	22.6	33.6	41.4	324.7	339.8	352.8
-1 Week +1	57.4	65.1	62.9	14.1	13.5	21.7	182.9	179.4	169.6	5.5	22.3	27.5	28.1	30.2	22.7	21.7	6.6	6.6	8.1	24.7	34.9	44.1	338.2	349.7	361.7
-1 Week +2	64.0	65.2	64.5	14.5	14.7	22.5	186.8	183.8	175.9	5.5	24.0	28.3	28.5	30.8	22.7	22.1	6.9	7.2	8.1	25.4	36.2	44.3	352.4	358.1	371.4
-1 Week +3	65.0	65.2	65.7	15.2	14.7	22.3	190.1	183.8	170.9	5.0	24.8	28.3	29.1	30.8	22.7	22.2	6.9	7.2	7.2	25.9	36.2	40.8	358.6	358.1	363.2
-1 Week +4	67.8	67.1	68.5	14.9	15.9	22.8	192.4	189.1	176.4	5.5	27.1	29.0	30.6	32.1	23.7	22.8	6.9	7.8	10.5	26.0	37.8	43.3	367.1	370.3	380.4
-1 Week +5	68.4	67.0	68.5	15.8	16.5	22.8	197.5	175.6	176.4	5.5	27.5	29.9	30.6	32.1	23.7	22.8	6.9	6.6	10.5	26.8	34.8	43.3	375.0	354.1	380.4
after purge	68.5	67.6	68.5	16.0	16.9	22.8	201.4	180.7	176.4	5.5	27.8	29.9	30.6	31.5	32.4	22.8	6.9	6.6	10.5	28.3	36.2	43.3	380.5	370.5	380.4
Classess Star	68.5	68.4	69.6	16.0	17.3	22.8	201.4	188.0	181.0	5.9	27.8	31.2	30.6	31.5	33.2	24.6	6.9	7.2	11.4	28.3	38.1	45.4	380.5	383.5	391.3
Day 1	68.8	68.4	69.6	16.3	17.5	23.2	201.9	194.5	186.4	6.1	29.0	32.3	28.6	31.8	34.3	25.0	6.9	7.2	11.7	28.8	39.8	46.4	383.6	394.0	397.0
Day 2	69.5	68.7	71.1	16.6	17.5	23.3	203.2	197.0	189.7	5.9	30.0	32.2	30.9	32.4	34.6	25.1	9.3	7.2	12.6	29.3	39.5	46.6	390.3	396.6	405.2
Day 3	69.5	69.0	71.3	17.5	17.4	23.5	204.9	198.6	190.9	6.0	30.2	32.3	30.9	32.8	34.6	25.3	9.3	7.2	13.2	30.7	39.4	47.0	395.0	398.4	408.1
Day 4	69.2	69.4	71.7	17.6	17.5	23.5	206.8	197.6	190.1	6.0	30.8	32.3	31.2	33.8	34.5	25.3	9.3	7.5	13.2	31.4	39.4	45.6	398.8	398.1	406.6
Week 1	69.2	69.4	72.0	17.7	17.5	23.5	201.3	198.5	191.8	6.1	31.2	32.3	31.3	33.7	34.6	24.9	9.3	10.8	14.4	29.6	40.6	44.8	391.9	403.6	408.8
Wk1+2	69.9	69.2	72.0	18.1	16.4	23.5	203.4	193.9	191.8	6.1	31.2	31.9	31.3	33.8	34.5	24.9	9.3	10.8	14.4	29.3	40.0	44.8	394.9	396.8	408.8
Wk1+3	69.9	69.2	72.2	18.2	16.4	23.5	204.6	193.9	191.8	6.1	31.3	31.9	31.3	33.8	34.5	24.9	9.3	10.8	15.7	29.6	40.0	44.7	396.7	396.8	410.2
Wk1+4	69.6	69.5	72.4	18.3	16.9	23.4	205.0	196.5	192.2	6.2	31.3	32.4	31.3	33.8	35.6	25.0	10.2	11.7	15.7	29.8	40.0	44.5	398.0	402.6	410.7
Week 2	69.7	69.6	72.3	18.5	17.7	23.4	204.8	196.5	192.2	6.2	31.3	32.4	31.6	33.8	35.6	25.1	9.9	11.7	16.9	29.5	39.9	44.2	397.6	403.5	411.9
Wk2+1	69.6	69.6	71.9	18.5	17.8	23.5	203.9	197.3	193.0	6.2	31.3	32.4	31.7	33.8	35.6	25.1	10.2	12.0	20.2	30.1	39.3	44.2	397.5	404.0	415.8
Wk2+2	69.4	69.6	71.8	18.5	18.0	23.5	205.2	196.5	193.0	6.1	31.0	33.7	33.0	33.8	35.6	25.1	22.0	19.5	25.0	29.6	39.7	42.9	409.5	412.6	420.4

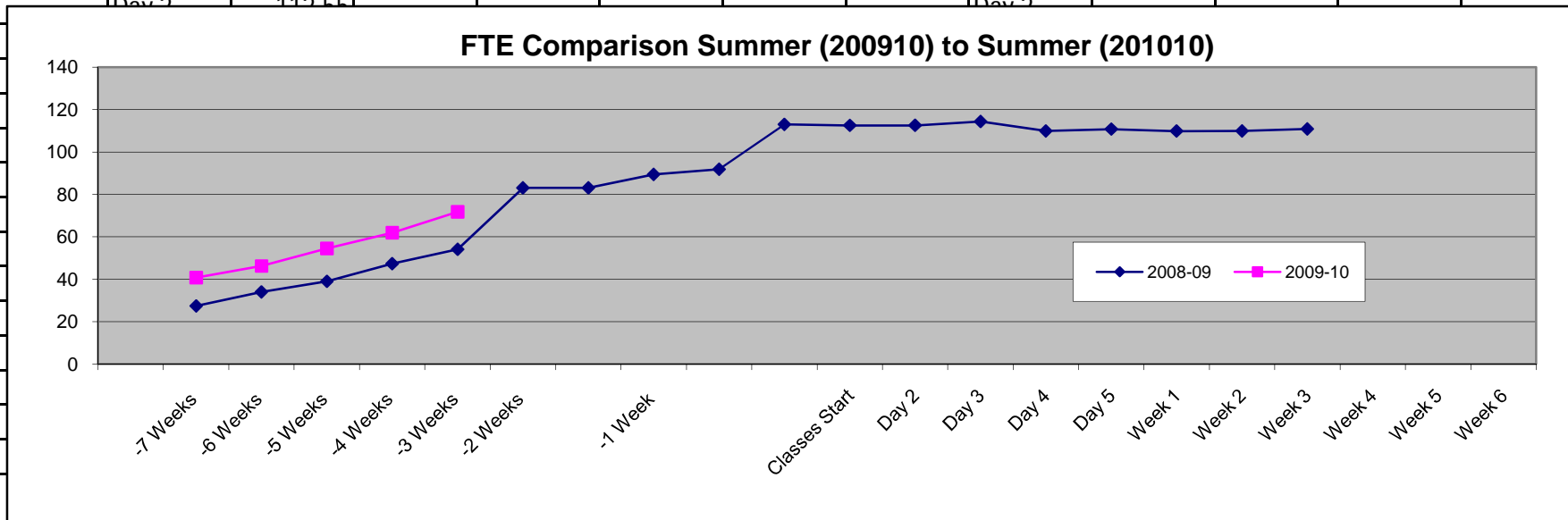
Week 3	69.4	69.6	71.6	18.5	18.0	23.7	205.2	196.5	192.2	6.1	31.0	33.7	33.2	33.8	35.6	25.0	22.0	19.5	26.2	29.6	39.7	43.2	409.5	412.6	421.2
Week 4	69.4	70.6	71.7	18.5	17.9	23.5	205.2	198.0	192.8	6.1	31.0	33.8	33.3	33.8	35.6	25.6	22.0	19.8	26.2	29.6	40.0	44.3	409.5	415.7	423.5
Week 5	69.4	70.6	71.8	18.6	18.1	24.5	205.9	198.7	193.8	6.3	31.0	33.8	33.6	34.0	35.6	26.1	24.7	22.8	27.7	30.6	40.2	47.3	414.1	419.8	431.1
Week 6	69.5	70.6	71.8	18.6	18.3	25.9	206.1	200.2	194.5	6.2	31.0	33.8	33.6	34.0	35.6	26.7	25.3	23.4	28.6	30.1	39.6	46.6	414.5	421.5	433.9
Week 7	69.5	71.0	77.4	18.7	18.6	26.0	207.0	201.0	194.2	6.2	31.5	34.0	33.6	34.0	35.6	27.1	28.3	24.6	28.6	29.4	38.3	43.6	418.4	423.1	436.7
Week 8	69.5	71.0	77.2	18.7	18.6	26.0	207.8	201.8	194.4	6.1	31.5	34.0	33.6	34.1	35.6	27.2	28.6	26.1	28.9	28.8	37.6	42.8	418.9	424.7	436.2
Week 9	69.5	71.0	77.9	18.7	18.8	26.0	210.1	202.3	194.9	6.1	31.5	34.0	33.6	34.1	35.6	27.8	30.7	29.1	29.2	29.0	37.8	42.9	423.6	428.5	438.4
Week 10	69.5	71.0	77.9	18.6	19.3	26.0	210.1	201.3	195.2	6.1	31.5	34.0	33.6	34.1	35.5	28.1	30.7	29.1	30.1	29.0	37.8	42.8	423.5	427.9	439.8
Week 11	69.5	71.0	77.9	18.6	19.7	26.0	210.7	201.6	194.2	6.1	31.5	34.0	33.6	34.1	34.3	28.2	30.7	29.4	30.1	29.0	37.8	42.8	424.1	427.8	438.9
Week 12	69.5	71.0	77.6	18.6	19.8	26.0	210.7	201.1	195.0	6.1	31.5	34.0	33.6	34.1	34.3	28.4	30.7	30.3	30.1	29.0	37.8	42.8	424.1	428.2	439.6
Week 13	69.5	71.0	78.0	18.6	19.9	26.0	210.7	201.2	195.6	6.1	31.5	34.0	33.6	34.1	34.3	28.7	30.7	31.2	30.1	29.0	37.8	42.6	424.1	429.3	440.7
Week 14	69.5	71.0	78.0	18.6	19.9	26.0	210.7	201.6	195.6	6.1	31.5	34.0	33.6	34.1	34.6	28.7	30.7	31.8	30.1	29.0	37.8	42.6	424.1	430.7	440.7
Week 15	69.5	71.0	78.0	18.6	19.9	26.0	210.7	201.7	196.2	6.1	31.5	34.0	33.6	34.1	34.7	28.8	30.7	31.8	30.1	29.0	37.8	42.6	424.1	430.8	441.4
Week 16	69.5	71.0	78.0	18.6	19.9	26.5	210.7	201.6	196.6	6.1	31.5	34.0	33.6	34.1	34.7	28.8	30.7	31.8	30.1	29.0	37.8	42.4	424.1	430.7	442.1
Week 17																									

These numbers are based on the 15 week semester and are "UNOFFICIAL". The purpose of this report is to provide point-in-time comparisons between the current semester and the same semester of last year.

FTE/Headcount Comparison Summer 200910-201010 by Week

Report Date: May 11, 2009

FTE						Headcount					
		2008-09	2009-10	Change	% Change			2008-09	2009-10	Change	% Change
Early Regis.	-7 Weeks					Early Regis.	-7 Weeks				
	-6 Weeks	27.40	40.70	13.30	48.5%		-6 Weeks	186	212	26	14.0%
	-5 Weeks	34.07	46.20	12.13	35.6%		-5 Weeks	214	248	34	15.9%
	-4 Weeks	39.00	54.50	15.50	39.7%		-4 Weeks	240	309	69	28.8%
	-3 Weeks	47.32	61.90	14.58	30.8%		-3 Weeks	276	346	70	25.4%
	-2 Weeks	54.07	71.80	17.73	32.8%		-2 Weeks	316	397	81	25.6%
		83.13						454			
	-1 Week	83.13					-1 Week	454			
		89.40						588			
		91.90						504			
	Classes Sta	113.07					Classes Start				
	Day 2	112.55					Day 2				



Morgan Community College
COUNTABLE FTE COMPARISONS BY SITE
Summer 2009 (201010)
Report Date: May 11, 2009

	Center Based												Program Based					
	Bennett		Burlington		Ft Morgan		MCC Online		Limon		Wray		Ag Businss		CCC Online		Total	
	200910	201010	200910	201010	200910	201010	200910	201010	200910	201010	200910	201010	200910	201010	200910	201010	200910	201010
-7 Weeks																		
-6 Weeks		1.3		0.9		22.8		2.2		1.1		1.3		0.0		11.0		40.7
-5 Weeks		0.8		1.0		25.8		2.7		1.2		2.0		0.0		12.7		46.2
-4 Weeks	0.3	0.9	1.0	0.7	25.1	30.8	0.0	3.4	1.1	1.2	4.8	2.5	0.0	0.0	6.8	15.0	39.0	54.5
-3 Weeks	0.4	0.5	1.9	0.7	29.6	34.8	0.0	3.9	2.6	1.5	5.4	2.6	0.0	0.0	7.5	17.9	47.3	61.9
-2 Weeks	0.7	0.5	2.7	1.9	32.5	38.2	0.0	4.3	5.1	1.7	6.0	3.3	0.0	0.0	7.2	21.9	54.1	71.8
							0.0											
-1 week	23.1		3.9		34.1		0.0		8.0		6.4		0.0		7.7		83.1	
-2 day	27.2		4.6		34.9		0.0		8.0		6.9		0.0		7.8		89.4	
-1 day	27.5		4.9		35.3		0.0		8.4		6.9		0.0		8.8		91.9	
Classes Sta	27.7		5.1		34.2		0.0		8.5		7.0		0.0		30.6		113.1	
Day 2	28.1		5.8		34.7		0.0		8.5		6.9		0.0		28.7		112.6	
Day 3	28.4		5.7		34.6		0.0		8.5		6.9		0.0		28.5		112.6	
Day 4	29.6		6.0		34.8		0.0		8.5		6.9		0.0		28.7		114.4	
Day 5	29.4		6.4		34.8		0.0		8.4		6.5		0.0		24.5		110.0	
Week 1	29.4		7.2		35.7		0.0		8.3		6.5		0.0		23.7		110.8	
	29.4		6.6		36.1		0.0		8.3		6.5		0.0		23.0		109.9	
Week 2	29.4		6.6		36.1		0.0		8.3		6.5		0.0		23.0		109.9	
Week 3	29.4		6.6		36.3		0.0		8.3		6.5		0.0		22.8		109.9	
Week 4	29.4		6.6		36.8		0.0		8.5		6.5		0.0		23.0		110.8	
Week 5																		
Week 6																		
Week 7																		
Week 8																		
Week 9																		
Week 10																		

These numbers are based on the Summer semester and are "UNOFFICIAL". The purpose of this report is to provide point-in-time comparisons between the current semester and the