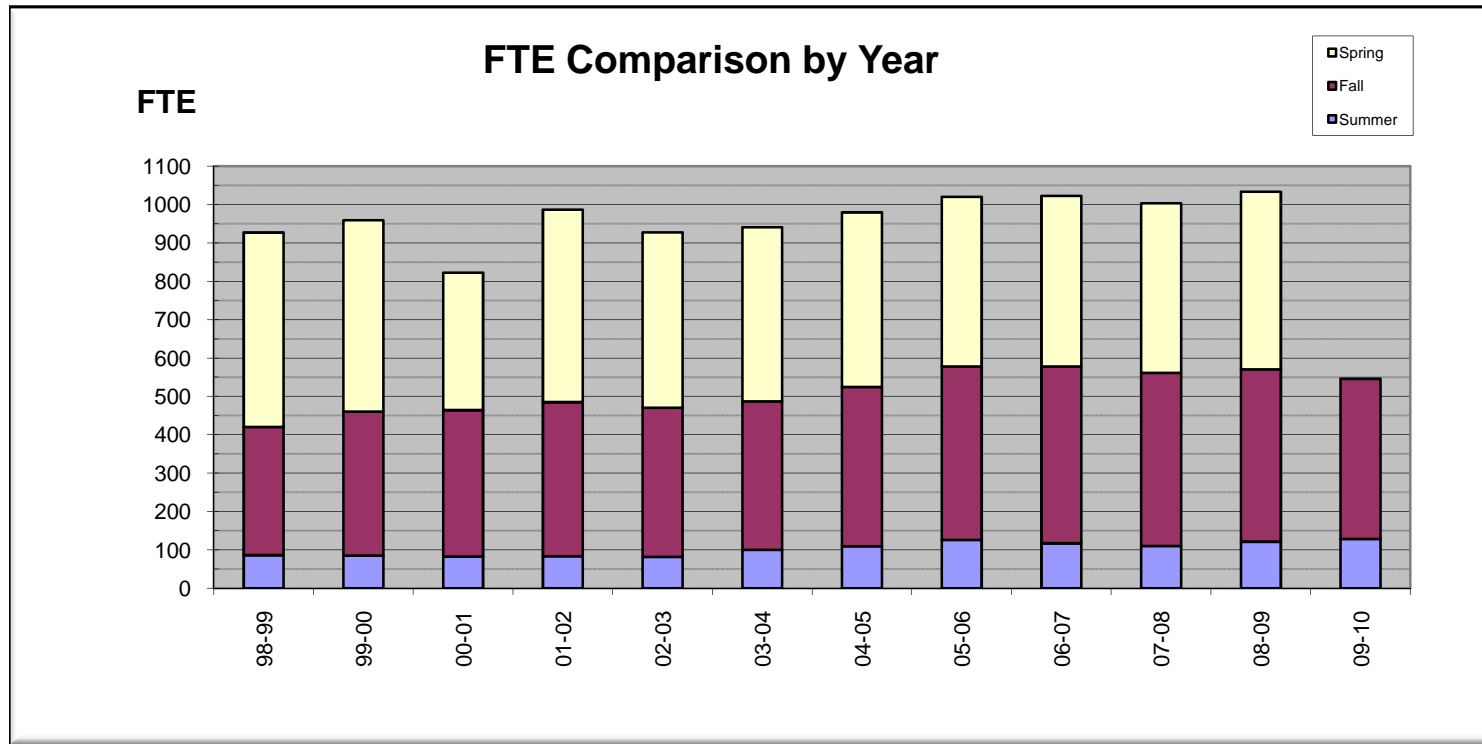


FTE Comparison (1998-2010)

by Year
08/19/09

Includes imputed FTE except
italicized numbers.

Year	Summer	Fall	Spring	Total
98-99	86.78	334.17	506.35	927.30
99-00	85.62	375.24	498.57	959.43
00-01	83.11	381.45	358.40	822.96
01-02	83.87	401.42	501.88	987.17
02-03	82.00	388.97	456.88	927.85
03-04	100.53	386.75	453.83	941.11
04-05	109.38	415.57	455.12	980.07
05-06	126.47	451.75	442.01	1020.23
06-07	117.50	460.66	444.86	1023.02
07-08	110.20	451.28	442.05	1003.53
08-09	121.73	448.95	462.84	1033.52
09-10	128.70	<i>417.60</i>		546.30



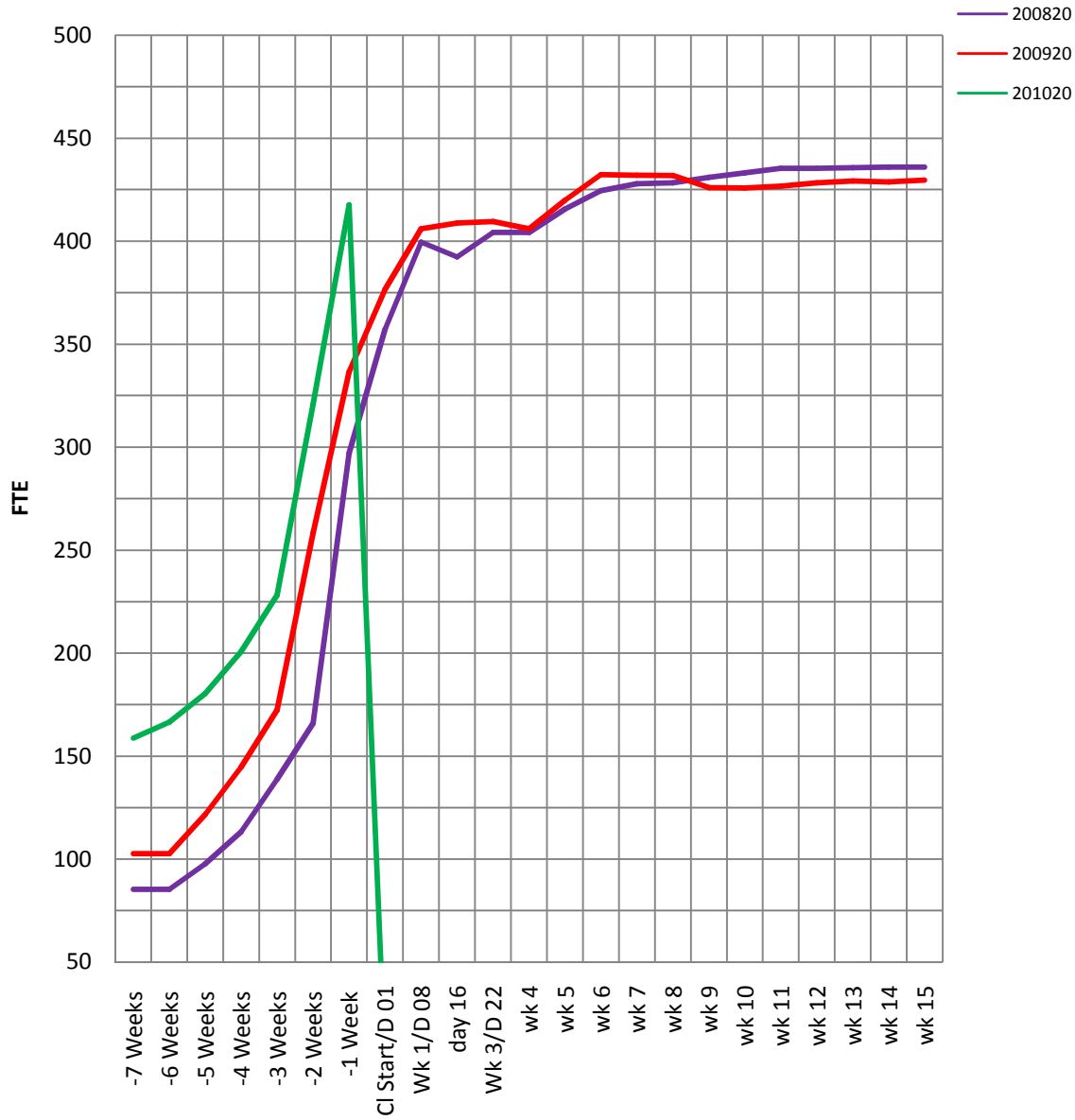
Morgan Community College
3-Year FTE / Headcount Comparison
Fall 2007, 2008, 2009
08/19/09

	Sampling Date (Current year)	*Comparison Point	FTE				
			Fall			Change in FTE	
			200820	200920	201020	+/-	% Change
Mon	07/06/09	-7 Weeks	85.3	102.7	158.8	56.1	55%
Mon	07/13/09	-6 Weeks	85.3	102.7	166.6	63.9	62%
Mon	07/20/09	-5 Weeks	97.7	121.5	180.3	58.8	48%
Mon	07/27/09	-4 Weeks	113.3	144.7	200.7	56.1	39%
Mon	08/03/09	-3 Weeks	138.8	172.5	228.2	55.7	32%
		-2.5 wks	153.8	253.7			
			153.8	253.7			
Mon	08/10/09	-2 Weeks	166.0	258.4	320.8	62.5	24%
Tue	08/11/09	Day	191.7				
Wed	08/12/09	Day	227.4	287.0			
Thu	08/13/09	Day	257.9	305.9			
Fri	08/14/09	Day	284.7	321.7			
Mon	08/17/09	-1 Week	297.1	336.6	397.0	60.4	18%
Tue	08/18/09	-4 day	303.1	350.9	407.1	56.2	16%
Wed	08/19/09	-3 day	313.3	358.3	417.6	59.3	17%
Thu	08/20/09	-2 day	326.4	368.9			
Fri	08/21/09	-1 day	343.8	361.0			
Mon	08/24/09	Cl Start/D 01	357.4	376.7			
Tue	08/25/09	day 02	371.2	395.3			
Wed	08/26/09	day 03	380.9	unk			
Thu	08/27/09	day 04	386.1	unk			
Fri	08/28/09	day 05	397.0	unk			
Mon	08/31/09	Wk 1/D 08	399.7	406.0			
Tue	09/01/09	day 09					
Wed	09/02/09	day 10					
Thu	09/03/09	day 11					
Fri	09/04/09	day 12					
Mon	09/07/09	Wk 2/D 15					
Tue	09/08/09	day 16	392.3	408.8			
Wed	09/09/09	day 17					
Thu	09/10/09	day 18	395.0	408.0			
Fri	09/11/09	day 19	399.1	unk			
Mon	09/14/09	Wk 3/D 22	404.3	409.6			
Mon	09/21/09	wk 4	404.3	406.1			
Mon	09/28/09	wk 5	415.6	419.8			
Mon	10/05/09	wk 6	424.6	432.3			
Mon	10/12/09	wk 7	427.9	432.0			
Mon	10/19/09	wk 8	428.3	431.9			
Sat		wk 8 day 5	430.6	425.5			
Mon	10/26/09	wk 9	431.0	426.0			
Mon	11/02/09	wk 10	433.2	425.8			
Mon	11/09/09	wk 11	435.4	426.7			
Mon	11/16/09	wk 12	435.4	428.4			
Mon	11/23/09	wk 13	435.7	429.2			
Mon	11/30/09	wk 14	436.0	428.8			
Mon	12/07/09	wk 15	436.0	429.7			
Mon	12/14/09	wk 16					

	Headcount				
	Fall			Chng in Headcount	
	200820	200920	201020	+/-	% Change
	228	352	540	188.0	53.41%
	228	352	587	235.0	66.76%
	282	403	633	230.0	57.07%
	358	498	699	201.0	40.36%
	450	589	801	212.0	35.99%
	506	858			
	506	858			
	547	877	1099	222.0	25.31%
	642	877			
	765	982			
	872	1079			
	975	1135			
	1024	1193	1364	171.0	14.33%
	1051	1247	1398	151.0	12.11%
	1092	1282	1430	148.0	11.54%
	1136	1322			
	1203	1297			
	1256	1371			
	1316	1429			
	1355	unk			
	1381	unk			
	1422	unk			
	1442	1495			
		1495			
	1412	1507			
	1437	1506			
	1459	unk			
	1492	1514			
	1515	1510			
	1576	1566			
	1612	1597			
	1641	1599			
	1644	1620			
	1669	1610			
	1671	1614			
	1694	1617			
	1705	1636			
	1719	1690			
	1729	1712			
	1737	1713			
	1737	1733			
					#VALUE!

Week	201020 FTE By Week		
	200820	200920	201020
-7 Weeks	85.3	102.7	158.8
-6 Weeks	85.3	102.7	166.6
-5 Weeks	97.7	121.5	180.3
-4 Weeks	113.3	144.7	200.7
-3 Weeks	138.8	172.5	228.2
-2 Weeks	166.0	258.4	320.8
-1 Week	297.1	336.6	417.6
Cl Start/D 01	357.4	376.7	0.0
Wk 1/D 08	399.7	406.0	0.0
day 16	392.3	408.8	0.0
Wk 3/D 22	404.3	409.6	0.0
wk 4	404.3	406.1	0.0
wk 5	415.6	419.8	0.0
wk 6	424.6	432.3	0.0
wk 7	427.9	432.0	0.0
wk 8	428.3	431.9	0.0
wk 9	431.0	426.0	0.0
wk 10	433.2	425.8	0.0
wk 11	435.4	426.7	0.0
wk 12	435.4	428.4	0.0
wk 13	435.7	429.2	0.0
wk 14	436.0	428.8	0.0
wk 15	436.0	429.7	0.0

Fall 2007, 2008, 2009 FTE Comparison



8/19/09

FTE By Week			
Week	200820	200920	201020
-7 Weeks	85.3	102.7	158.8
-6 Weeks	85.3	102.7	166.6
-5 Weeks	97.7	121.5	180.3
-4 Weeks	113.3	144.7	200.7
-3 Weeks	138.8	172.5	228.2
-2 Weeks	166.0	258.4	320.8
-1 Week	297.1	336.6	417.6
Start	357.4	376.7	0.0
Week 1	399.7	406.0	0.0
wk 2 day 2	392.3	408.8	0.0
wk 3	404.3	409.6	0.0
wk 4	404.3	406.1	0.0
wk 5	415.6	419.8	0.0
wk 6	424.6	432.3	0.0
wk 7	427.9	432.0	0.0
wk 8	428.3	431.9	0.0
wk 9	431.0	426.0	0.0
wk 10	433.2	425.8	0.0
wk 11	435.4	426.7	0.0
wk 12	435.4	428.4	0.0
wk 13	435.7	429.2	0.0
wk 14	436.0	428.8	0.0
wk 15	436.0	429.7	0.0

201020 enrollment shows zero until the results are available for that week.day.

Morgan Community College
FTE Comparison by Center by Week (Fall 2009 vs Fall 2008)
 08/19/09

Sampling Date (Current)	*Comparison Point	By Center										By Program				Total			
		Bennett		Burlington		Ft Morgan		MCC Online		Limon		Wray		Ag Businss				CCC Online	
		200920	201020	200920	201020	200920	201020	200920	201020	200920	201020	200920	201020	200920	201020	200920	201020	200920	201020
07/06/09	-7 Weeks		1.00		10.50		128.30	0.00	0.00		0.80		4.60		2.10		11.50		158.80
07/13/09	-6 Weeks	0.10	1.30	0.20	10.90	86.48	134.30	0.00	0.00	2.63	0.90	1.87	5.40	0.30	0.60	11.13	13.20	102.71	166.60
07/20/09	-5 Weeks	0.20	1.40	0.63	11.10	100.00	144.00	0.00	0.00	3.40	0.90	1.87	5.90	1.80	1.20	12.73	15.80	120.63	180.30
07/27/09	-4 Weeks	0.70	1.70	0.53	11.60	114.10	157.30	0.00	0.00	4.10	0.90	3.37	6.20	6.00	4.80	15.90	18.20	144.70	200.70
08/03/09	-3 Weeks	1.87	4.00	0.53	12.50	172.57	174.60	0.00	0.00	4.60	0.90	3.60	9.30	10.50	5.70	18.10	21.20	211.77	228.20
08/10/09	-2 Weeks	56.90	67.00	1.63	13.40	143.42	195.40	0.00	0.00	16.20	1.20	4.20	10.40	11.10	7.50	24.90	25.90	258.35	320.80
08/17/09	-1 week	65.60	79.80	18.30	21.80	175.50	212.20	0.00	0.00	25.90	20.70	7.42	12.90	12.00	15.90	31.90	33.70	336.62	397.00
08/18/09	-4 day	65.60	79.70	18.30	23.20	175.50	217.30	0.00	0.00	25.90	22.40	7.42	13.20	12.00	15.90	31.90	35.40	336.62	407.10
08/19/09	-3 day	65.60	79.70	18.30	24.20	175.50	221.70	0.00	0.00	25.90	22.70	7.42	15.70	12.00	15.60	31.90	38.00	336.62	417.60
08/20/09	-2 day	65.60		18.30		175.50		0.00		25.90		7.42		12.00		31.90		336.62	
08/21/09	-1 day	65.60		18.30		175.50		0.00		25.90		7.42		12.00		31.90		336.62	
08/24/09	Classes Start	65.60		23.67		134.30		0.00		30.93		12.53		16.80		35.37		319.20	
08/25/09	Day 2							0.00											
08/26/09	Day 3							0.00											
08/27/09	Day 4							0.00											
08/28/09	Day 5							0.00											
08/31/09	Week 1	65.60		25.70		209.25		0.00		31.96		15.63		18.90		36.43		403.47	
09/01/09	Week 1 + 1							0.00											
09/02/09	Week 1 + 2	68.17		25.70		209.25		0.00		31.97		15.63		18.90		36.43		406.05	
09/03/09	Week 1 + 3							0.00											
09/04/09	Week 1 + 4							0.00											
09/07/09	Week 2	68.17		26.23		209.95		0.00		32.23		15.63		18.90		36.40		407.51	
09/14/09	Week 3	68.27				211.65		0.00		32.23		15.87		18.90		36.43		383.35	
09/21/09	Week 4	68.07		25.67		207.78		0.00		32.47		17.03		18.90		36.13		406.05	
09/28/09	Week 5	68.27		25.97		207.78		0.00		32.57		17.87		24.03		40.10		416.59	
10/05/09	Week 6	68.27		26.30		211.08		0.00		32.57		17.92		25.87		48.17		430.18	
10/12/09	Week 7	68.20		26.30		213.38		0.00		32.56		18.05		25.83		47.30		431.62	
10/19/09	Week 8	68.47		27.60		214.90		0.00		32.70		18.75		26.13		36.90		425.45	
10/26/09	Week 9	68.47		27.60		215.20		0.00		32.70		18.75		26.13		37.10		425.95	
11/02/09	Week 10	68.47		27.60		215.22		0.00		32.70		18.88		25.83		37.10		425.80	
11/09/09	Week 11	68.47		27.60		215.37		0.00		32.70		19.62		26.13		36.80		426.69	
11/16/09	Week 12	68.47		28.43		215.43		0.00		32.70		20.58		26.13		36.80		428.54	
11/23/09	Week 13	68.47		28.43		215.43		0.00		33.33		20.58		23.13		36.80		426.17	
11/30/09	Week 14	68.47		28.43		215.43		0.00		33.33		20.58		26.13		36.80		429.17	
12/07/09	Week 15	68.50		28.43		215.40		0.00		33.33		20.80		26.40		36.80		429.66	

Caveats: 1. These numbers do not include imputed FTE, which is calculated at the end of each semester.
 2. These numbers are based on the Summer semester and are "UNOFFICIAL". The purpose of this report is to provide point-in-time comparisons between the current semester and the same semester of last year.
 3. *The comparison point represents the same date for each year. The actual date of the sample varies from year to year, but it is the same date, relative to when the term stops;