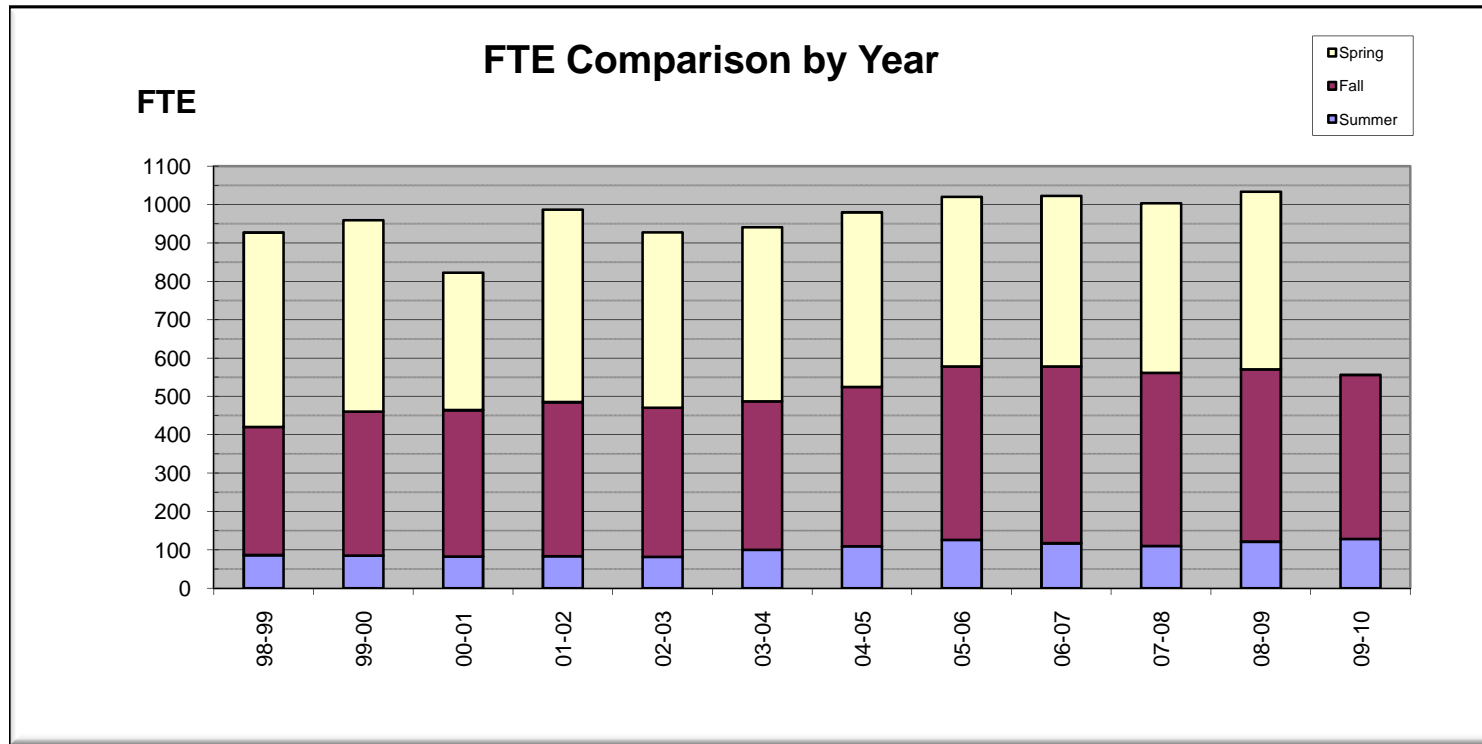


FTE Comparison (1998-2010)

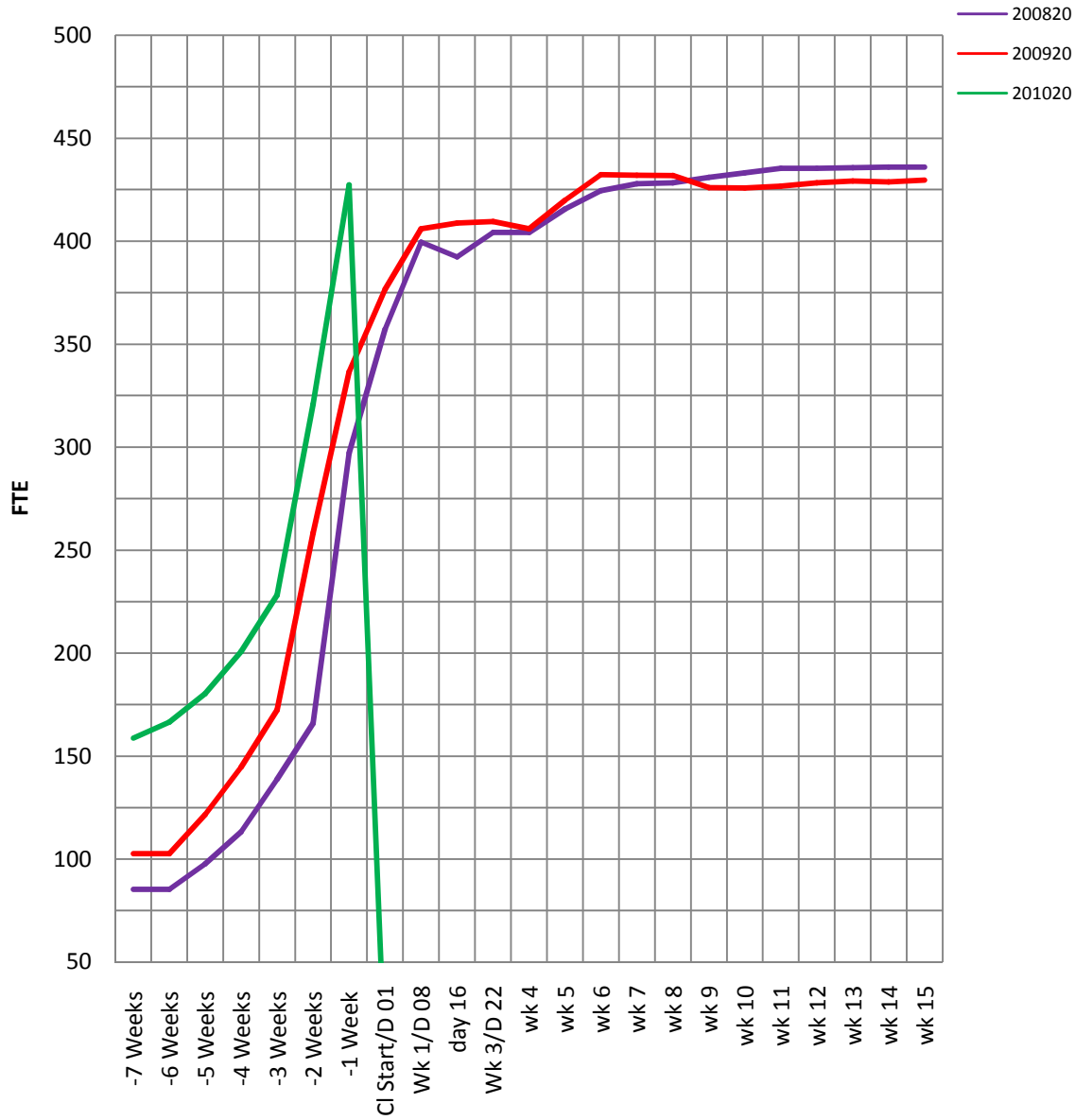
by Year
08/20/09

Includes imputed FTE except
italicized numbers.

Year	Summer	Fall	Spring	Total
98-99	86.78	334.17	506.35	927.30
99-00	85.62	375.24	498.57	959.43
00-01	83.11	381.45	358.40	822.96
01-02	83.87	401.42	501.88	987.17
02-03	82.00	388.97	456.88	927.85
03-04	100.53	386.75	453.83	941.11
04-05	109.38	415.57	455.12	980.07
05-06	126.47	451.75	442.01	1020.23
06-07	117.50	460.66	444.86	1023.02
07-08	110.20	451.28	442.05	1003.53
08-09	121.73	448.95	462.84	1033.52
09-10	<i>128.70</i>	<i>427.40</i>		556.10



Fall 2007, 2008, 2009 FTE Comparison



8/20/09

FTE By Week			
Week	200820	200920	201020
-7 Weeks	85.3	102.7	158.8
-6 Weeks	85.3	102.7	166.6
-5 Weeks	97.7	121.5	180.3
-4 Weeks	113.3	144.7	200.7
-3 Weeks	138.8	172.5	228.2
-2 Weeks	166.0	258.4	320.8
-1 Week	297.1	336.6	427.4
Start	357.4	376.7	0.0
Week 1	399.7	406.0	0.0
wk 2 day 2	392.3	408.8	0.0
wk 3	404.3	409.6	0.0
wk 4	404.3	406.1	0.0
wk 5	415.6	419.8	0.0
wk 6	424.6	432.3	0.0
wk 7	427.9	432.0	0.0
wk 8	428.3	431.9	0.0
wk 9	431.0	426.0	0.0
wk 10	433.2	425.8	0.0
wk 11	435.4	426.7	0.0
wk 12	435.4	428.4	0.0
wk 13	435.7	429.2	0.0
wk 14	436.0	428.8	0.0
wk 15	436.0	429.7	0.0

201020 enrollment shows zero until the results are available for that week.day.

Morgan Community College
FTE Comparison by Center by Week (Fall 2009 vs Fall 2008)
 08/20/09

Sampling Date (Current)	*Comparison Point	By Center										By Program				Total			
		Bennett		Burlington		Ft Morgan		MCC Online		Limon		Wray		Ag Businss				CCC Online	
		200920	201020	200920	201020	200920	201020	200920	201020	200920	201020	200920	201020	200920	201020	200920	201020	200920	201020
07/06/09	-7 Weeks		1.00		10.50		128.30	0.00	0.00		0.80		4.60		2.10		11.50		158.80
07/13/09	-6 Weeks	0.10	1.30	0.20	10.90	86.48	134.30	0.00	0.00	2.63	0.90	1.87	5.40	0.30	0.60	11.13	13.20	102.71	166.60
07/20/09	-5 Weeks	0.20	1.40	0.63	11.10	100.00	144.00	0.00	0.00	3.40	0.90	1.87	5.90	1.80	1.20	12.73	15.80	120.63	180.30
07/27/09	-4 Weeks	0.70	1.70	0.53	11.60	114.10	157.30	0.00	0.00	4.10	0.90	3.37	6.20	6.00	4.80	15.90	18.20	144.70	200.70
08/03/09	-3 Weeks	1.87	4.00	0.53	12.50	172.57	174.60	0.00	0.00	4.60	0.90	3.60	9.30	10.50	5.70	18.10	21.20	211.77	228.20
08/10/09	-2 Weeks	56.90	67.00	1.63	13.40	143.42	195.40	0.00	0.00	16.20	1.20	4.20	10.40	11.10	7.50	24.90	25.90	258.35	320.80
08/17/09	-1 week	65.60	79.80	18.30	21.80	175.50	212.20	0.00	0.00	25.90	20.70	7.42	12.90	12.00	15.90	31.90	33.70	336.62	397.00
08/18/09	-4 day	65.60	79.70	18.30	23.20	175.50	217.30	0.00	0.00	25.90	22.40	7.42	13.20	12.00	15.90	31.90	35.40	336.62	407.10
08/19/09	-3 day	65.60	79.70	18.30	24.20	175.50	221.70	0.00	0.00	25.90	22.70	7.42	15.70	12.00	15.60	31.90	38.00	336.62	417.60
08/20/09	-2 day	65.60	79.80	18.30	24.60	175.50	226.50	0.00	0.00	25.90	23.30	7.42	17.50	12.00	17.10	31.90	38.60	336.62	427.40
08/21/09	-1 day	65.60		18.30		175.50		0.00		25.90		7.42		12.00		31.90		336.62	
08/24/09	Start	65.60		23.67		175.50		0.00		30.93		12.53		16.80		35.37		360.40	
08/25/09	Day 2	65.60		23.67		175.50		0.00		30.93		12.53		16.80		35.37		360.40	
08/26/09	Day 3	65.60		23.67		175.50		0.00		30.93		12.53		16.80		35.37		360.40	
08/27/09	Day 4	65.60		23.67		175.50		0.00		30.93		12.53		16.80		35.37		360.40	
08/28/09	Day 5	65.60		23.67		175.50		0.00		30.93		12.53		16.80		35.37		360.40	
08/31/09	Week 1	65.60		25.70		209.25		0.00		31.96		15.63		18.90		36.43		403.47	
09/01/09	Week 1 + 1	65.60						0.00										65.60	
09/02/09	Week 1 + 2	68.17		25.70		209.25		0.00		31.97		15.63		18.90		36.43		406.05	
09/03/09	Week 1 + 3	68.30		25.83		211.32		0.00		32.33		15.63		18.90		36.53		408.84	
09/04/09	Week 1 + 4	68.30		25.90		210.65		0.00		32.23		15.63		18.90		36.40		408.01	
09/07/09	Week 2	68.27		26.23		211.65		0.00		32.23		15.87		18.90		36.40		409.55	
09/14/09	Week 3	68.07		25.77		207.80		0.00		32.47		17.03		18.90		36.13		406.17	
09/21/09	Week 4	68.07		25.67		207.78		0.00		32.47		17.03		18.90		36.13		406.05	
09/28/09	Week 5	68.27		25.97		207.78		0.00		32.57		17.87		24.03		40.10		416.59	
10/05/09	Week 6	68.27		26.30		211.08		0.00		32.57		17.92		25.87		48.17		430.18	
10/12/09	Week 7	68.20		26.30		213.38		0.00		32.56		18.05		25.83		47.30		431.62	
10/19/09	Week 8	68.47		27.60		214.90		0.00		32.70		18.75		26.13		36.90		425.45	
10/26/09	Week 9	68.47		27.60		215.20		0.00		32.70		18.75		26.13		37.10		425.95	
11/02/09	Week 10	68.47		27.60		215.22		0.00		32.70		18.88		25.83		37.10		425.80	
11/09/09	Week 11	68.47		27.60		215.37		0.00		32.70		19.62		26.13		36.80		426.69	
11/16/09	Week 12	68.47		28.43		215.43		0.00		32.70		20.58		26.13		36.80		428.54	
11/23/09	Week 13	68.47		28.43		215.43		0.00		33.33		20.58		23.13		36.80		426.17	
11/30/09	Week 14	68.47		28.43		215.43		0.00		33.33		20.58		26.13		36.80		429.17	
12/07/09	Week 15	68.50		28.43		215.40		0.00		33.33		20.80		26.40		36.80		429.66	

- Caveats:
1. These numbers do not include imputed FTE, which is calculated at the end of each semester.
 2. These numbers are based on the Summer semester and are "UNOFFICIAL". The purpose of this report is to provide point-in-time comparisons between the current semester and the same semester of last year.
 3. *The comparison point represents the same date for each year. The actual date of the sample varies from year to year, but it is the same date, relative to when the term stops;