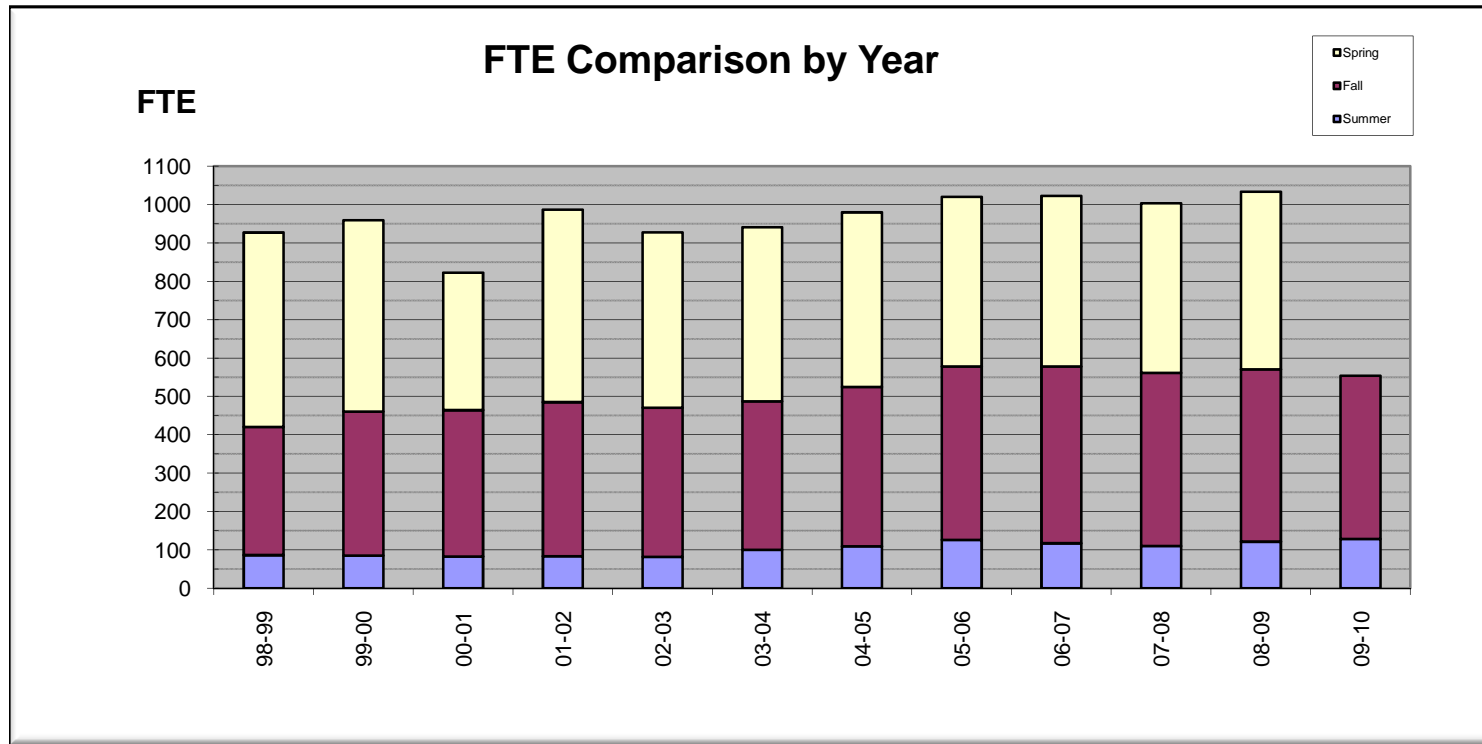


FTE Comparison (1998-2010)

by Year
08/24/09

Includes imputed FTE except
italicized numbers.

Year	Summer	Fall	Spring	Total
98-99	86.78	334.17	506.35	927.30
99-00	85.62	375.24	498.57	959.43
00-01	83.11	381.45	358.40	822.96
01-02	83.87	401.42	501.88	987.17
02-03	82.00	388.97	456.88	927.85
03-04	100.53	386.75	453.83	941.11
04-05	109.38	415.57	455.12	980.07
05-06	126.47	451.75	442.01	1020.23
06-07	117.50	460.66	444.86	1023.02
07-08	110.20	451.28	442.05	1003.53
08-09	121.73	448.95	462.84	1033.52
09-10	<i>128.70</i>	<i>425.40</i>		554.10



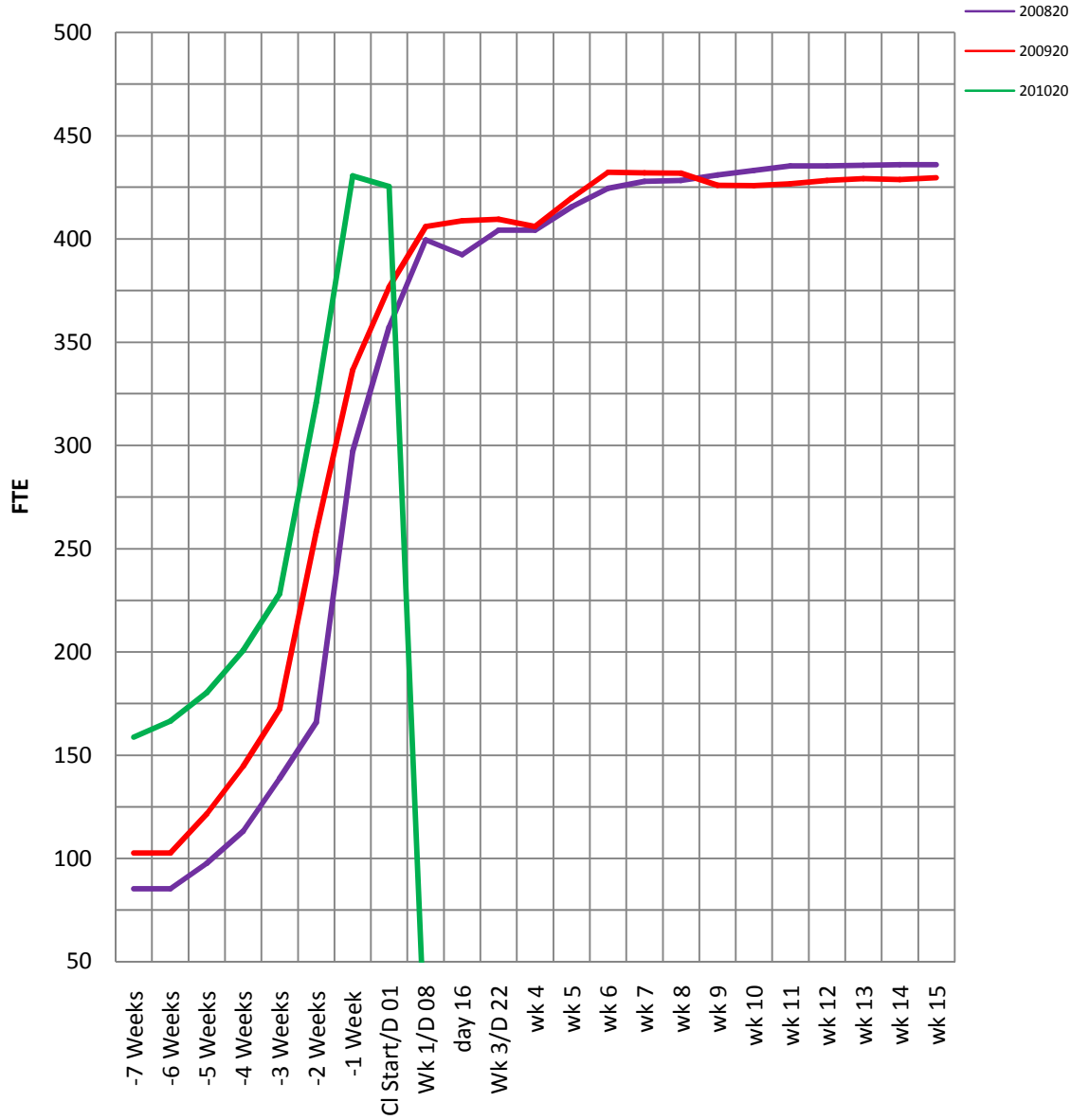
[Back](#)

Morgan Community College
3-Year FTE / Headcount Comparison
Fall 2007, 2008, 2009
08/24/09

	Sampling Date (Current year)	*Comparison Point	FTE					Headcount				
			Fall			Change in FTE		Fall			Chng in Headcount	
			200820	200920	201020	+/-	% Change	200820	200920	201020	+/-	% Change
Mon	07/06/09	-7 Weeks	85.3	102.7	158.8	56.1	55%	228	352	540	188.0	53.41%
Mon	07/13/09	-6 Weeks	85.3	102.7	166.6	63.9	62%	228	352	587	235.0	66.76%
Mon	07/20/09	-5 Weeks	97.7	121.5	180.3	58.8	48%	282	403	633	230.0	57.07%
Mon	07/27/09	-4 Weeks	113.3	144.7	200.7	56.1	39%	358	498	699	201.0	40.36%
Mon	08/03/09	-3 Weeks	138.8	172.5	228.2	55.7	32%	450	589	801	212.0	35.99%
		-2.5 wks	153.8	253.7				506	858			
			153.8	253.7				506	858			
Mon	08/10/09	-2 Weeks	166.0	258.4	320.8	62.5	24%	547	877	1099	222.0	25.31%
Tue	08/11/09	Day	191.7					642	877			
Wed	08/12/09	Day	227.4	287.0				765	982			
Thu	08/13/09	Day	257.9	305.9				872	1079			
Fri	08/14/09	Day	284.7	321.7				975	1135			
Mon	08/17/09	-1 Week	297.1	336.6	397.0	60.4	18%	1024	1193	1364	171.0	14.33%
Tue	08/18/09	-4 day	303.1	350.9	407.1	56.2	16%	1051	1247	1398	151.0	12.11%
Wed	08/19/09	-3 day	313.3	358.3	417.6	59.3	17%	1092	1282	1430	148.0	11.54%
Thu	08/20/09	-2 day	326.4	368.9	427.4	58.5	16%	1136	1322	1463	141.0	10.67%
Fri	08/21/09	-1 day	343.8	361.0	430.5	69.5	19%	1203	1297	1500	203.0	15.65%
Mon	08/24/09	Cl Start/D 01	357.4	376.7	425.4	48.8	13%	1256	1371	1496.0	125.0	9.12%
Tue	08/25/09	day 02	371.2	395.3				1316	1429			
Wed	08/26/09	day 03	380.9	unk				1355	unk			
Thu	08/27/09	day 04	386.1	unk				1381	unk			
Fri	08/28/09	day 05	397.0	unk				1422	unk			
Mon	08/31/09	Wk 1/D 08	399.7	406.0				1442	1495			
Tue	09/01/09	day 09										
Wed	09/02/09	day 10										
Thu	09/03/09	day 11										
Fri	09/04/09	day 12										
Mon	09/07/09	Wk 2/D 15							1495			
Tue	09/08/09	day 16	392.3	408.8				1412	1507			
Wed	09/09/09	day 17										
Thu	09/10/09	day 18	395.0	408.0				1437	1506			
Fri	09/11/09	day 19	399.1	unk				1459	unk			
Mon	09/14/09	Wk 3/D 22	404.3	409.6				1492	1514			
Mon	09/21/09	wk 4	404.3	406.1				1515	1510			
Mon	09/28/09	wk 5	415.6	419.8				1576	1566			
Mon	10/05/09	wk 6	424.6	432.3				1612	1597			
Mon	10/12/09	wk 7	427.9	432.0				1641	1599			
Mon	10/19/09	wk 8	428.3	431.9				1644	1620			
Sat		wk 8 day 5	430.6	425.5				1669	1610			
Mon	10/26/09	wk 9	431.0	426.0				1671	1614			
Mon	11/02/09	wk 10	433.2	425.8				1694	1617			
Mon	11/09/09	wk 11	435.4	426.7				1705	1636			
Mon	11/16/09	wk 12	435.4	428.4				1719	1690			
Mon	11/23/09	wk 13	435.7	429.2				1729	1712			
Mon	11/30/09	wk 14	436.0	428.8				1737	1713			
Mon	12/07/09	wk 15	436.0	429.7				1737	1733			
Mon	12/14/09	wk 16										#VALUE!

201020 FTE By Week			
Week	200820	200920	201020
-7 Weeks	85.3	102.7	158.8
-6 Weeks	85.3	102.7	166.6
-5 Weeks	97.7	121.5	180.3
-4 Weeks	113.3	144.7	200.7
-3 Weeks	138.8	172.5	228.2
-2 Weeks	166.0	258.4	320.8
-1 Week	297.1	336.6	430.5
Cl Start/D 01	357.4	376.7	425.4
Wk 1/D 08	399.7	406.0	0.0
day 16	392.3	408.8	0.0
Wk 3/D 22	404.3	409.6	0.0
wk 4	404.3	406.1	0.0
wk 5	415.6	419.8	0.0
wk 6	424.6	432.3	0.0
wk 7	427.9	432.0	0.0
wk 8	428.3	431.9	0.0
wk 9	431.0	426.0	0.0
wk 10	433.2	425.8	0.0
wk 11	435.4	426.7	0.0
wk 12	435.4	428.4	0.0
wk 13	435.7	429.2	0.0
wk 14	436.0	428.8	0.0
wk 15	436.0	429.7	0.0

Fall 2007, 2008, 2009 FTE Comparison



8/24/09

FTE By Week			
Week	200820	200920	201020
-7 Weeks	85.3	102.7	158.8
-6 Weeks	85.3	102.7	166.6
-5 Weeks	97.7	121.5	180.3
-4 Weeks	113.3	144.7	200.7
-3 Weeks	138.8	172.5	228.2
-2 Weeks	166.0	258.4	320.8
-1 Week	297.1	336.6	425.4
Start	357.4	376.7	0.0
Week 1	399.7	406.0	0.0
wk 2 day 2	392.3	408.8	0.0
wk 3	404.3	409.6	0.0
wk 4	404.3	406.1	0.0
wk 5	415.6	419.8	0.0
wk 6	424.6	432.3	0.0
wk 7	427.9	432.0	0.0
wk 8	428.3	431.9	0.0
wk 9	431.0	426.0	0.0
wk 10	433.2	425.8	0.0
wk 11	435.4	426.7	0.0
wk 12	435.4	428.4	0.0
wk 13	435.7	429.2	0.0
wk 14	436.0	428.8	0.0
wk 15	436.0	429.7	0.0

201020 enrollment shows zero until the results are available for that week.day.

Morgan Community College
FTE Comparison by Center by Week (Fall 2009 vs Fall 2008)
 08/24/09

Sampling Date (Current)	*Comparison Point	By Center										By Program				Total			
		Bennett		Burlington		Ft Morgan		MCC Online		Limon		Wray		Ag Businss		CCC Online		200920	201020
		200920	201020	200920	201020	200920	201020	200920	201020	200920	201020	200920	201020	200920	201020	200920	201020	200920	201020
07/06/09	-7 Weeks		1.00		10.50		128.30	0.00	0.00		0.80		4.60		2.10		11.50		158.80
07/13/09	-6 Weeks	0.10	1.30	0.20	10.90	86.48	134.30	0.00	0.00	2.63	0.90	1.87	5.40	0.30	0.60	11.13	13.20	102.71	166.60
07/20/09	-5 Weeks	0.20	1.40	0.63	11.10	100.00	144.00	0.00	0.00	3.40	0.90	1.87	5.90	1.80	1.20	12.73	15.80	120.63	180.30
07/27/09	-4 Weeks	0.70	1.70	0.53	11.60	114.10	157.30	0.00	0.00	4.10	0.90	3.37	6.20	6.00	4.80	15.90	18.20	144.70	200.70
08/03/09	-3 Weeks	1.87	4.00	0.53	12.50	172.57	174.60	0.00	0.00	4.60	0.90	3.60	9.30	10.50	5.70	18.10	21.20	211.77	228.20
08/10/09	-2 Weeks	56.90	67.00	1.63	13.40	143.42	195.40	0.00	0.00	16.20	1.20	4.20	10.40	11.10	7.50	24.90	25.90	258.35	320.80
08/17/09	-1 week	65.60	79.80	18.30	21.80	175.50	212.20	0.00	0.00	25.90	20.70	7.42	12.90	12.00	15.90	31.90	33.70	336.62	397.00
08/18/09	-4 day	65.60	79.70	18.30	23.20	175.50	217.30	0.00	0.00	25.90	22.40	7.42	13.20	12.00	15.90	31.90	35.40	336.62	407.10
08/19/09	-3 day	65.60	79.70	18.30	24.20	175.50	221.70	0.00	0.00	25.90	22.70	7.42	15.70	12.00	15.60	31.90	38.00	336.62	417.60
08/20/09	-2 day	65.60	79.80	18.30	24.60	175.50	226.50	0.00	0.00	25.90	23.30	7.42	17.50	12.00	17.10	31.90	38.60	336.62	427.40
08/21/09	-1 day	65.60	79.90	18.30	24.60	175.50	227.90	0.00	0.00	25.90	24.60	7.42	17.40	12.00	17.10	31.90	39.00	336.62	430.50
08/24/09	Start	65.60	79.80	23.67	25.90	175.50	217.80	0.00	0.00	30.93	25.30	12.53	17.90	16.80	17.40	35.37	41.30	360.40	425.40
08/25/09	Day 2	65.60		23.67		175.50		0.00		30.93		12.53		16.80		35.37		360.40	
08/26/09	Day 3	65.60		23.67		175.50		0.00		30.93		12.53		16.80		35.37		360.40	
08/27/09	Day 4	65.60		23.67		175.50		0.00		30.93		12.53		16.80		35.37		360.40	
08/28/09	Day 5	65.60		23.67		175.50		0.00		30.93		12.53		16.80		35.37		360.40	
08/31/09	Week 1	65.60		25.70		209.25		0.00		31.96		15.63		18.90		36.43		403.47	
09/01/09	Week 1 + 1	65.60		25.70		209.25		0.00		31.96		15.63		18.90		36.43		403.47	
09/02/09	Week 1 + 2	68.17		25.70		209.25		0.00		31.97		15.63		18.90		36.43		406.05	
09/03/09	Week 1 + 3	68.30		25.83		211.32		0.00		32.33		15.63		18.90		36.53		408.84	
09/04/09	Week 1 + 4	68.30		25.90		210.65		0.00		32.23		15.63		18.90		36.40		408.01	
09/07/09	Week 2	68.27		26.23		211.65		0.00		32.23		15.87		18.90		36.40		409.55	
09/14/09	Week 3	68.07		25.77		207.80		0.00		32.47		17.03		18.90		36.13		406.17	
09/21/09	Week 4	68.07		25.67		207.78		0.00		32.47		17.03		18.90		36.13		406.05	
09/28/09	Week 5	68.27		25.97		207.78		0.00		32.57		17.87		24.03		40.10		416.59	
10/05/09	Week 6	68.27		26.30		211.08		0.00		32.57		17.92		25.87		48.17		430.18	
10/12/09	Week 7	68.20		26.30		213.38		0.00		32.56		18.05		25.83		47.30		431.62	
10/19/09	Week 8	68.47		27.60		214.90		0.00		32.70		18.75		26.13		36.90		425.45	
10/26/09	Week 9	68.47		27.60		215.20		0.00		32.70		18.75		26.13		37.10		425.95	
11/02/09	Week 10	68.47		27.60		215.22		0.00		32.70		18.88		25.83		37.10		425.80	
11/09/09	Week 11	68.47		27.60		215.37		0.00		32.70		19.62		26.13		36.80		426.69	
11/16/09	Week 12	68.47		28.43		215.43		0.00		32.70		20.58		26.13		36.80		428.54	
11/23/09	Week 13	68.47		28.43		215.43		0.00		33.33		20.58		23.13		36.80		426.17	
11/30/09	Week 14	68.47		28.43		215.43		0.00		33.33		20.58		26.13		36.80		429.17	
12/07/09	Week 15	68.50		28.43		215.40		0.00		33.33		20.80		26.40		36.80		429.66	

- Caveats:
1. These numbers do not include imputed FTE, which is calculated at the end of each semester.
 2. These numbers are based on the Summer semester and are "UNOFFICIAL". The purpose of this report is to provide point-in-time comparisons between the current semester and the same semester of last year.
 3. *The comparison point represents the same date for each year. The actual date of the sample varies from year to year, but it is the same date, relative to when the term stops;