

Wray Wreport

Morgan Community College

IMPORTANT DATES

- Dec 1st — Last day to apply for Fall loans
- Dec 1st — Wray Center closed in the afternoon
- **Dec 5th—9th— FINALS WEEK GOOD LUCK STUDENTS!**
- *Dec 8th—Ag Community Discussion at Canyon Coffee & Cafe (9 a.m.)*
- Dec 9th — Last day of Fall semester 15-week classes
- **Dec 26—Jan 2nd — Christmas Break (All MCC Closed)**
- Jan 3rd—6th — Spring Registration
- **Jan 4th—TUITION DUE!**
- Jan 10th — Drop for Non-payment of Tuition and Fees
- Jan 12th — New Student Orientation (Fort Morgan)
- **Jan 14th — Hoof Trimming Workshop**
- **Jan 14th— Nurse Aide classes start**
- Jan 16 — Spring Regular 15-week classes begin
- Jan 30—Last day to add spring regular 15-week classes.

Finals week is almost here!! Student's and faculty at the MCC Wray Campus are jumping for joy, as they prepare for finals week.

I know... finals weeks is not really as exciting as I'm making it out to be...

Here are a few tips for making finals week a little more bearable.

DETERMINING FACTORS OF TRANSFER STUDENT SUCCESS

Many students who attend a community college eventually transfer to a four year college or university. Dr. Esther Hugo has studied success strategies for transfer students, and as a transfer counselor for many years, has helped ease the transfer process for students at the community college level.

She has outlined three determining factors for a transfer student's probable success at a four year college.

The first measure is a student's successful completion of Algebra 2 before entering a four year college. This has a significant impact on student success while obtaining his or her Associate's degree, as well as a Bachelor's degree .

Momentum also impacts a student's success. Students who continue their coursework during the summer after finishing their Associate's Degree has an increased chance of succeeding at the four year college or university.

The last indicator is a student's persistence. A student who completes 20 credits in his or her first year of community college will keep the student on track to finish their Associate's Degree in two years.



Academics, momentum, and persistence all contribute to a student's successful transfer to a four year college.

FINALS WEEK SUCCESS!

Think of finals week as a two week experience (I know... who wants to extend finals week, right?). By doing this, you buy yourself time in your schedule to study because you are less likely to fill up your time with social events.

Complete a detailed schedule of your study times. Write down how many hours it will take to effectively study for each final you will be taking.

The last tip is to start studying 10 days before your first final. This will give you plenty of time to put in the hours it will take to study for each final, and you won't have the extra stress of cramming knowledge.

<http://www.makecollegecount.com/2011/college-finals-week-success-secrets/>

Student Corner

IMPORTANT INFORMATION ABOUT YOUR FINANCIAL AID

The priority deadline for the 2012-2013 financial aid application is April 1, 2012. There are a new procedures and policies to keep in mind when completing your FAFSA for the new school year.

Students selected for verification or those requesting a Professional Judgment, are required by the Financial Aid office to have the IRS data match or the actual IRS Tax Transcripts. They will no longer be able to accept paper tax forms.

The IRS data match is slated to be available February 1, 2012. After that

date, a student whose taxes are filed electronically will be available for the match within two weeks of filing their return. Students who file paper returns may not have the IRS Data Match or IRS Tax Transcripts available for 6-8 weeks after filing their return.

Students are encouraged to file their taxes as soon as January 1, 2012 for the 2012-2013 aid year, however they will need to go back to the fafsa.ed.gov link to complete the match **after** February 1st to avoid having to submit their IRS Tax Transcripts (if selected for verification).

Students who are selected for verification by the Department of Education and have completed the IRS data match (AND have not changed or updated the IRS data), will only have to complete the 2012-2013 Verification Worksheet.

If a student does not have a data match on file and is selected for verification OR if they request a Professional Judgment review for an EFC change, they will have to provide an official IRS Tax Transcript along with the 2012-2013 Verification Worksheet.

HIGHER ONE ACCOUNT CHANGES

Higher One will be making some changes to the structuring of your account. This will not effect your refunds, how you view your account details, or use of the card.

Effective December 30, 2011, your account will be split into two "sub-accounts." You will have a "Checking Sub-Account" and a "Savings Sub-Account". However, when you view your account, you will see only one account, just as before the change. Neither account will gain interest on the balances.

The separate accounts are set up so that when your checking account exceeds a

certain threshold, the excess will flow into your savings account. The money in the savings account will be transferred to your checking account as charges against your checking account appear.

There can be five transfers from savings to checking per cycle. If a sixth transfer is needed, it will automatically transfer all the money from your savings account to your checking.

Another important change happening is the Insufficient Funds and Uncollected Funds fees.

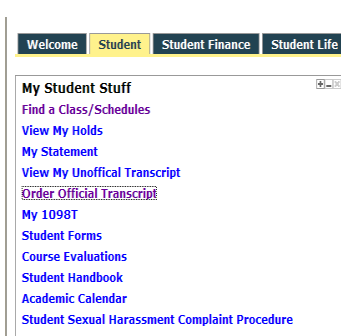
Currently, you pay \$29.00 for the first time it happens, and \$38.00 each time

you have insufficient funds or uncollected funds within a 12 month time period.

The charges, effective January 23, 2012, will be \$29.00 for the first occurrence, and \$38.00 for each time it happens again, and does not start over after the 12 month grace period.

You should have received an email regarding these changes. Please read this information carefully, and be fully aware of the changes. If you have any questions regarding your Higher One account, call 1-877-524-4013 to speak with a Customer Care representative.

REQUESTING TRANSCRIPTS ON THE PORTAL



As college applications are quickly approaching, you may find yourself needing an MCC transcript sent to the college or university of your choice. You can conveniently request a transcript using the portal by following these instructions:

Visit www.morgancc.edu to access the MyMCC link, and log in to your portal account.

Click on the "Student" tab at the top of the page.

In the first box on the left side of the screen, titled "My Student Stuff", click on the link "Order Official Transcript".

A new window will open, directing you to complete the steps to request your transcript.

The transcripts will be sent directly to the college(s) or university(ies) you have indicated on the form.

Faculty Corner

THE INFORMATION AGE MIND

As you have probably observed, the upcoming generations of students are becoming more and more tech-savvy. Faculty members of colleges and universities, along with K-12 teachers are having to be more creative with their teaching methods in order to keep the students excited about the content. One way of making the course content more exciting is to incorporate more technology.

Students today are more accustomed to typing notes and assignments, rather than handwriting the information. In fact, most of the time that used to be spent on

penmanship is now taken up by keyboarding lessons. By typing the information in a word processor, people are more quickly able to manipulate the data in order to get the best outcome.

Owning and using technological devices is a natural part of living for the information age generation. It is not unheard of to see students talking on their cell phones and typing on their computer at the same time. The idea of not being connected, and able to get in touch with anyone at any second is unnerving to them.

As a result of this, students in this generation are expecting the latest technologies at their fingertips wherever they go — including the classroom.

Despite the necessity for technology being incorporated into the teaching methods, there must be a balance of “technology with the instructor’s personal style, and the students’ learning style”. Are you balancing your teaching methods in order to equip your students to be life-long learners?

<http://www.learningoutcomeassessment.org/OccasionalPapers.htm>

“During 1998, for the first time since television was introduced fifty years ago, the number of hours young people spent watching television decreased”.
Frاند, Jason L., Information Age Minds

USING A RUBRIC TO GRADE

The use of a rubric to grade student work in your classes can be extremely advantageous for both you and the students.

Rubrics help categorize student work against a benchmark you have set for them to succeed. Providing the students a rubric will outline the expectations you have for them in completing their assignment with success. It offers the students no excuse for poor work, because they know what an acceptable and unacceptable assignment looks like to the instructor.

A rubric also allows the instructor to grade objectively. Every student is scored the same, and there is not room for the student to accuse instructors of grading unfairly.

Once you have developed the rubric, grading can be completed more quickly because the objectives are clearly outlined and easy to follow before the assignment is even given to the students.

There are some downfalls of using a

rubric, however. A rubric does not account for outside circumstances that may happen. They also can be too analytical for artistic projects. Therefore, rubrics are not appropriate for every assignment, but can be helpful to offer students in helping them complete many different assignments.

Check out http://www.teach-technology.com/web_tools/rubrics/rubricprocon.html for more information on how to make rubrics.

RESEARCH WEBSITES

You can stay up-to-date on current research happenings in the content area you are teaching by using the research websites available on the portal.

The research websites are located under the “Resources” tab. You can find the link in the first box on the left side.

Click on the “Research Websites” link. This will open a new window, and from there you can click on the content area of choice.

Once you click on a content area, it will give you a list of online resources where you can search for the topic you wish to research.

Keeping up-to-date on the current research topics in your content area can make the course content you present more interesting to the students.

Providing research articles to read will also give them the skills of reading and comprehending research.



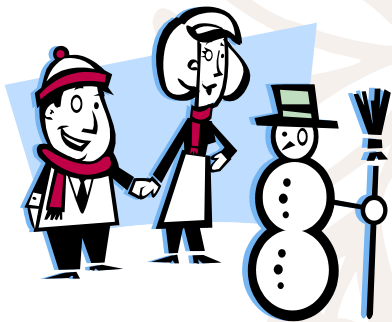
Dairy Cattle Hoof Trimming Workshop

Jim Smith, hoof trimmer will be covering the anatomy of a cow hoof, proper hoof health, and techniques of trimming dairy cattle through a hands-on workshop.

Join us on January 14th, starting at 8:30 AM at the Wray Center Campus.

Cost is \$45, and admission to MCC is required.

Admission, Pre-Registration, and fee due on or before January 10th. For more information, email wray@morgancc.edu.



HAVE A MERRY CHRISTMAS!

UPDATED SPRING SCHEDULE

Daytime Classes					
Classroom	Monday	Tuesday	Wednesday	Thursday	Saturday
2					
3					
4				Basic Anatomy & Physiology BIO1061B1 (10628 - 4) 12-1:30 PM C Osmus	
5				Anatomy & Physiology 2 BIO2021B1 (10631 - 4) 2 - 3:30 PM C Osmus	
Classroom	Evening Classes				
2	Admin of ECE Programs ECE2401B1 (10633 - 3) 6 - 9 PM D Huwa	Admin: HR for ECE ECE2411B1 (10634 - 3) 6 - 9 PM D Huwa	Colorado History HIS225101 (10824 - 3) 6-9 PM K Salmela	Geography GEO105102 (10825 - 3) 6 - 9 PM R Ward	
3	Introductory Algebra MAT090104 (10644 - 4) 6 - 8 PM M Quist	College Algebra MAT121106 (10646-4) 6 - 9 PM M Quist	Introductory Algebra MAT090104 (10644-4) 6 - 8 PM M Quist		Nurse Aide NUA101104 (10826 - 4)/NUA170104 (10827 -1) 8:00 am - 4:30 pm 1/14-3/17 + 30 hours Clinical arranged K Kneub
4	Prin of Microeconomics ECO202102 (10635 - 3) 6 - 9 PM S Howard	Sociology SOC102101 (10659-3) 6 - 9 PM J Brophy	Academic Achievement Strategies AAA090101 (10838 - 3) 6-9 PM A Murphy Shaw	Human Growth & Devel PSY235103 (10658-3) 6 - 9 PM J Brophy	
5	English Composition 2 ENG122106 (10639-3) 6 - 9 PM L Clemons	Masterpieces of Lit 1 LIT201101 (10642-3) 6 - 9 PM L Clemons	Intro to Shakespeare LIT225101 (10831 - 3) 6-9 PM L Clemons		
OTHER LOCATIONS					